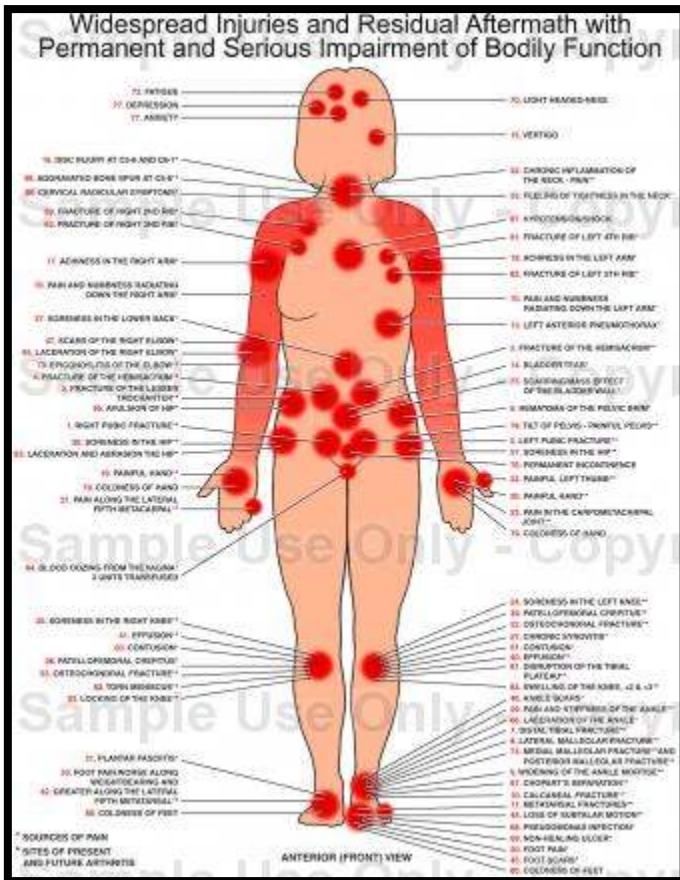


# MEDICAL-LEGAL RESEARCH SUMMARY

## Trauma Series #83

### Whiplash Injury is More Than Neck Pain



When representing clients that have been injured as a result of a whiplash type injury, eliciting a proper history is critically important. Looking into every aspect of the patient's condition and documenting the injuries properly is often overlooked or incomplete. Hincapié, Cassidy, Côté, Carroll and Guzmán (2010) conducted a population based study of the location of pain after a traffic injury. They stated, "**Pain after traffic injury is most commonly reported in multiple body areas; isolated neck pain is extremely rare**" (Hincapié et al., 2010, p. 434).

As the time from injury progresses, there are many injuries that get overlooked in favor of the more obvious. This fact was highlighted with the authors stating, "Only 0.4% of respondents reported posterior neck pain only" (Hincapié et al., 2010, p. 434). This concept has been visualized by astute clinicians that understand the mechanisms of injury in trauma patients. However, there have not been any studies prior to this one that investigated such occurrences. The authors go on to state, "**Our results suggest that conceptualizing pain after traffic injury as primarily neck pain may be misdirected**" (Hincapié et al., 2010, p. 437).

Image Compliments of Medical Legal Art via The Doe Report ([www.doereport.com](http://www.doereport.com)). Copyright © 2010 Medical Legal Art, All rights reserved.

When injury victims are being evaluated, it is important that the examining doctor be aware of this very important research. Staying up to date with newly published research related to trauma is an important aspect to properly caring for these clients. Having a detailed conversation and properly documenting injury sites should be norm and not the exception.

**Nashville Spine Injury and Health**  
Joel L. Buckner, D.C., C.C.I.C., C.C.E.P.  
387 Haywood Lane  
Nashville, TN 37211  
P 615-833-8851 F 615-833-8881  
Email [drbuckner@hotmail.com](mailto:drbuckner@hotmail.com)  
[nashvillespine.net](http://nashvillespine.net)

***"Clinically Correlating Causality to Bodily Injury and Persistent Functional Loss"***